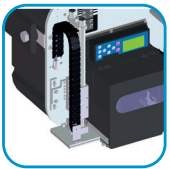


The Easyliner is an efficient print apply machine, easy to use for any operator, lightweight and low footprint.

- speed and liner maximum width depending on Sato LT408 print module installed
- built around a solid anodized aluminium alloy plate, with all the components protected by the rear metal shell. A safe and robust machine, designed to last over time
- 3 pneumatic solenoid valves
- reel housing (diameter 250mm / 9.84")
- liner path rollers numbered for quick loading
- most easy to use, thanks to the multi functional operating button with integrated luminous LED
- alarm reset button
- a luminous LED that signals alarms, machine state, stand-by (activated by external signal) or failure
- two flow regulators to control the exit and return of the pneumatic actuator
- two flow regulators to control the suction and holding force (Air Assist) of the label, at the dispensing stage

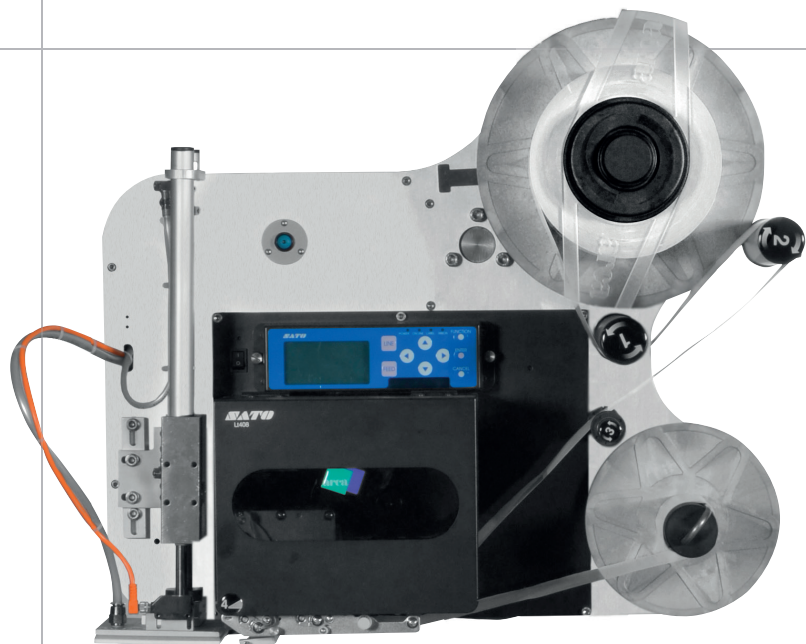
Applicators

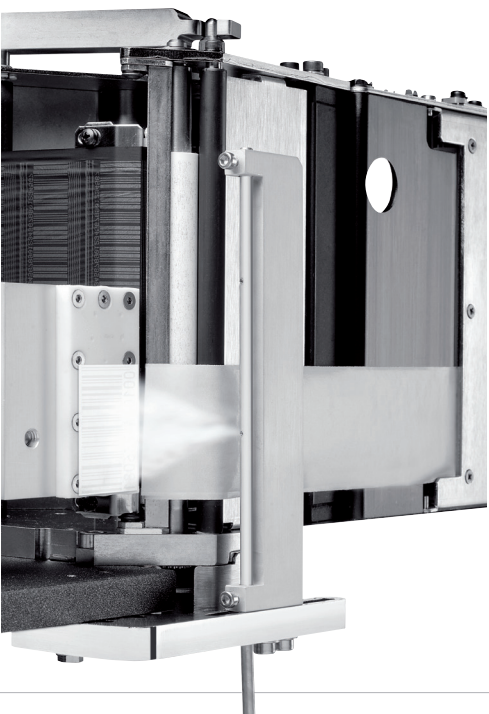


**HIGH
PRECISION SAFE**

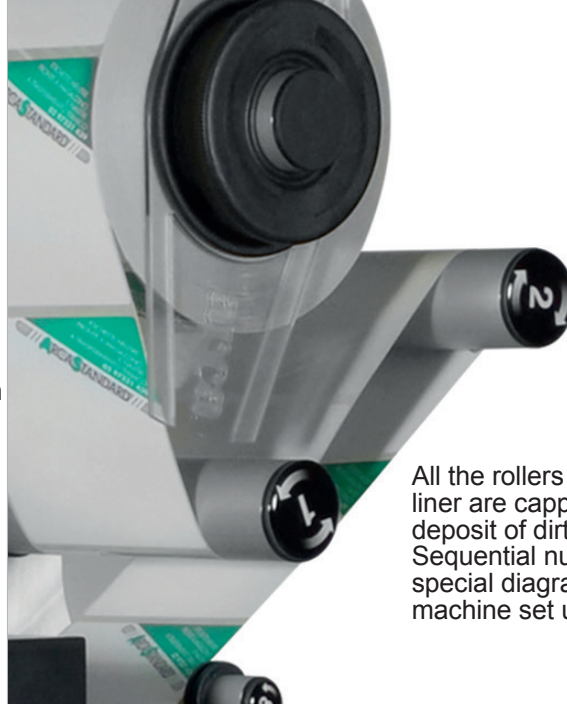


EASY JET





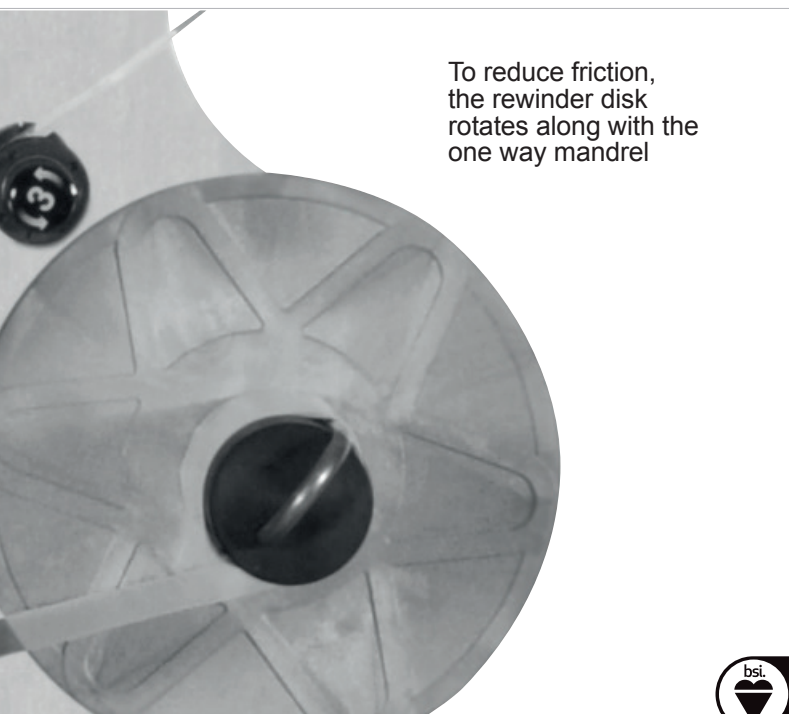
Arca pneumatic applicators are equipped with Air Assist: a directionable air blast which holds the label up during dispensing, while passing from the silicon liner to the support pad



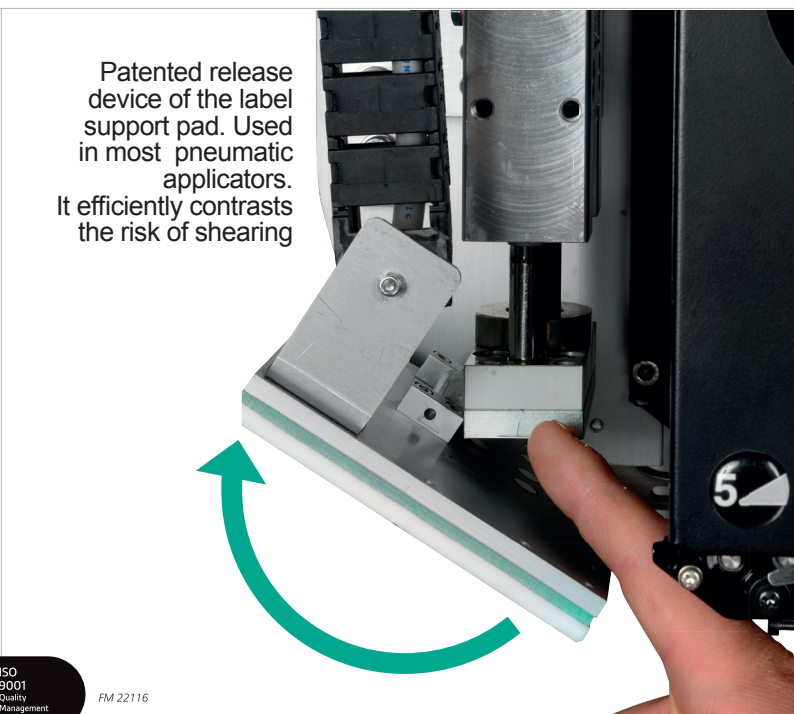
All the rollers that guide the liner are capped to avoid the deposit of dirt. Sequential numbering or special diagrams facilitate machine set up



Easyliner with Easy Jet



To reduce friction, the rewinder disk rotates along with the one way mandrel



Patented release device of the label support pad. Used in most pneumatic applicators. It efficiently contrasts the risk of shearing



FM 22116